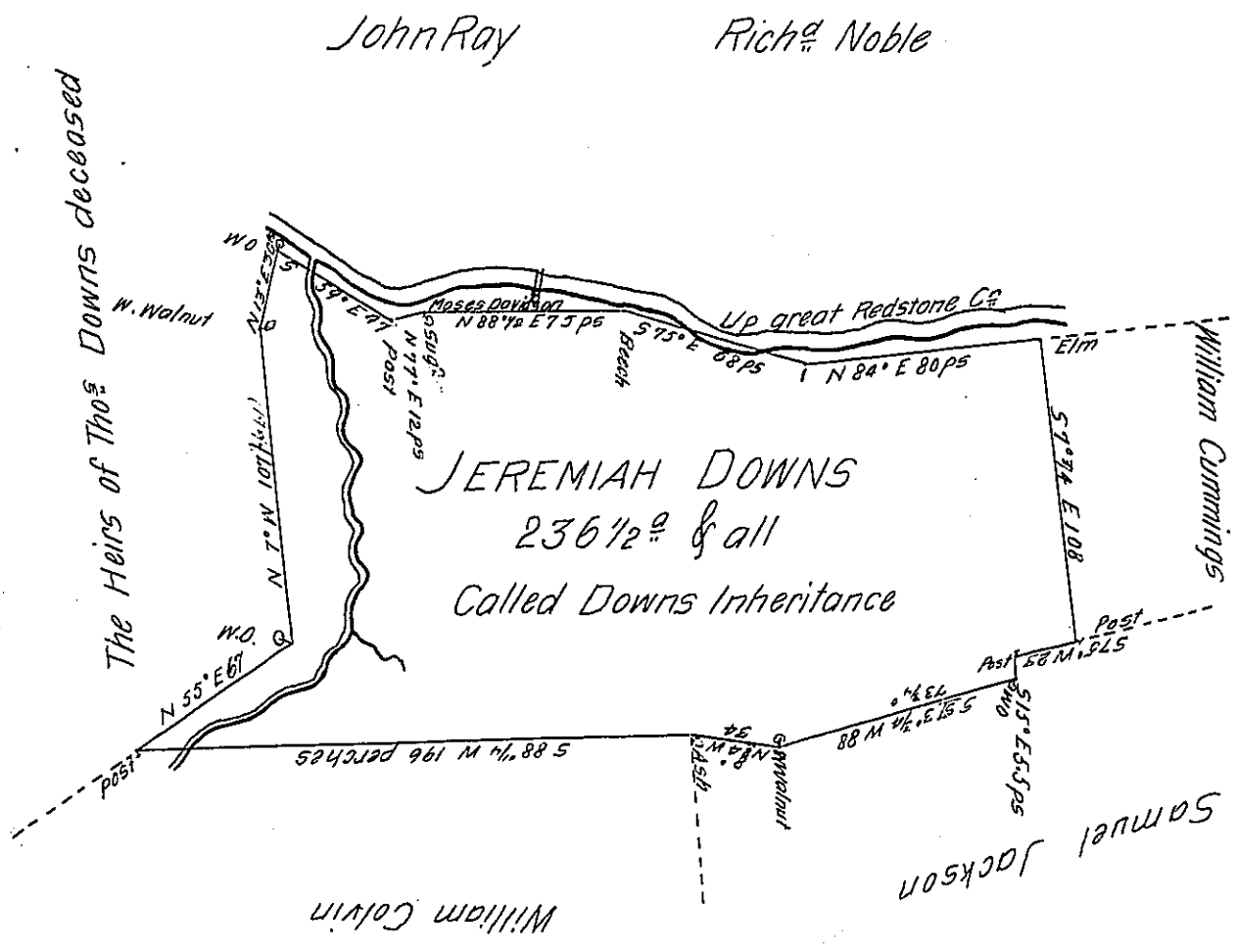


Note, from the Sugar Tree up the North 88 1/2 E line and from thence up Redstone the Patent must bound on Moses Davidson as he owns a small Lot Whereon his Mill Stands and the Creek nearly as far as this Survey extends.
A McClean



Situate adjoining Great Redstone Creek in Franklin Township Fayette County & Surveyed the 10th Day of May 1787 In Pursuance of a Warrant dated the 1st day of March 1787

P: Alexander McClean Deputy

To John Lukens Esquire
Surveyor General

IN TESTIMONY that the above is a copy of the original remaining on file in the Department of Internal Affairs of Pennsylvania, made conformably to an Act of Assembly approved the 16th day of February, 1833, I have hereunto set my Hand and caused the Seal of said Department to be affixed at Harrisburg, this first day of August 1904

Joac B. Brown
Secretary of Internal Affairs.